



Practical. Affordable. Luxurious.



romayahomes

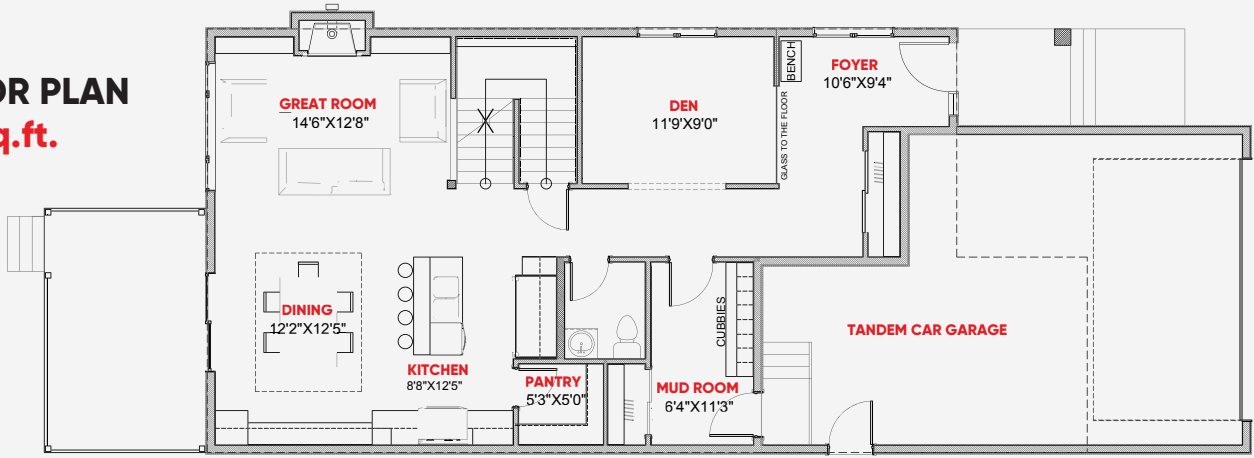


Two Storey - **3,146 sq.ft.**

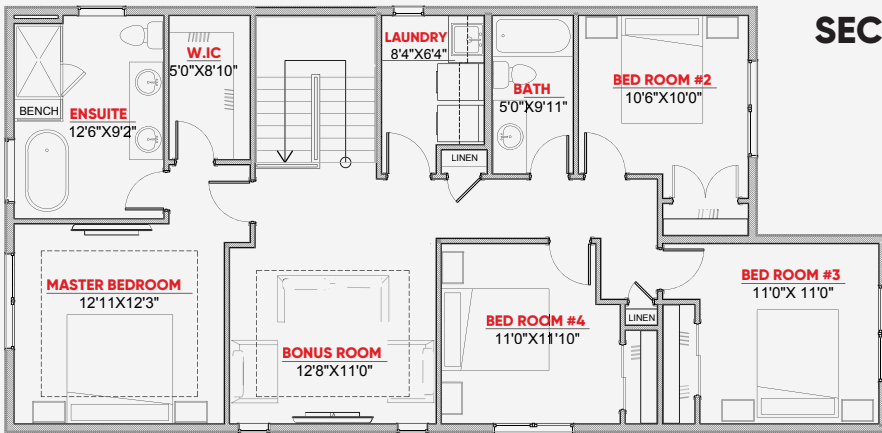
THE CAVALLI

5 Bedrooms | 3.5 Bathrooms | Great Room | Den

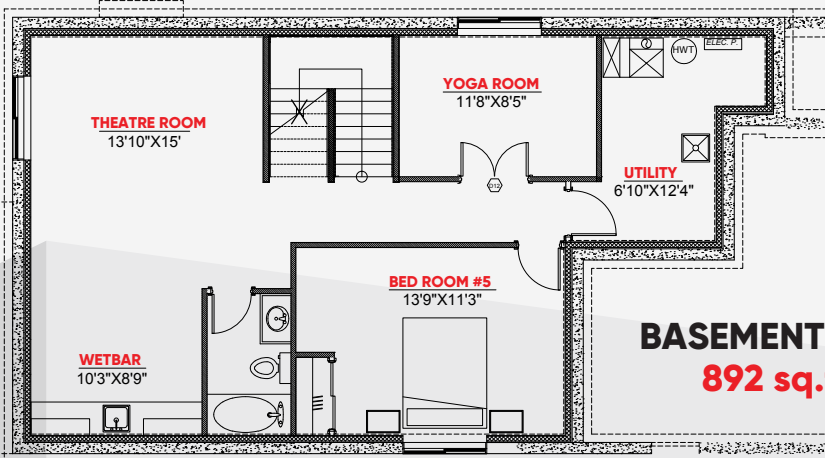
MAIN FLOOR PLAN
1033 sq.ft.



SECOND FLOOR PLAN
1221 sq.ft.



BASEMENT PLAN
892 sq.ft.



THE CAVALLI

TWO STOREY - 3,146 sq.ft.

FEATURES

- 5 Bedrooms
- 4 Bathrooms
- Maple Finishing
- Tandem Car Garage
- Custom Kitchen to the Ceiling
- Wetbar - Yoga Room**
- Security - Audio - Theatre**

Show Home Address

8 Edison Drive
St. Albert, AB

sales@romayahomes.com

780.239.6224
780.239.2890

romayahomes.com